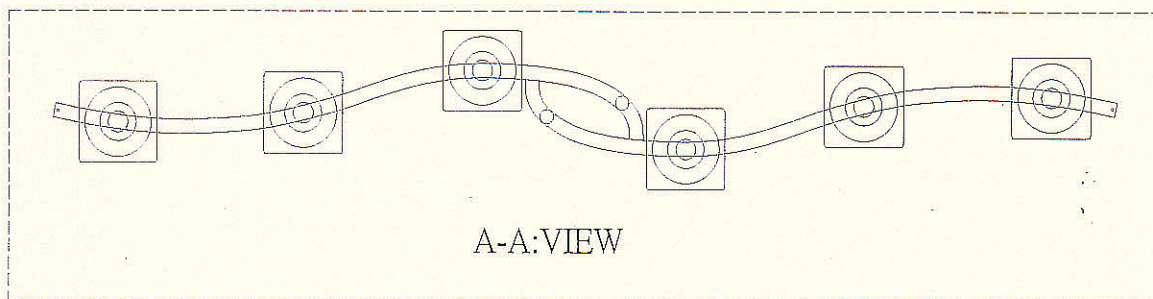
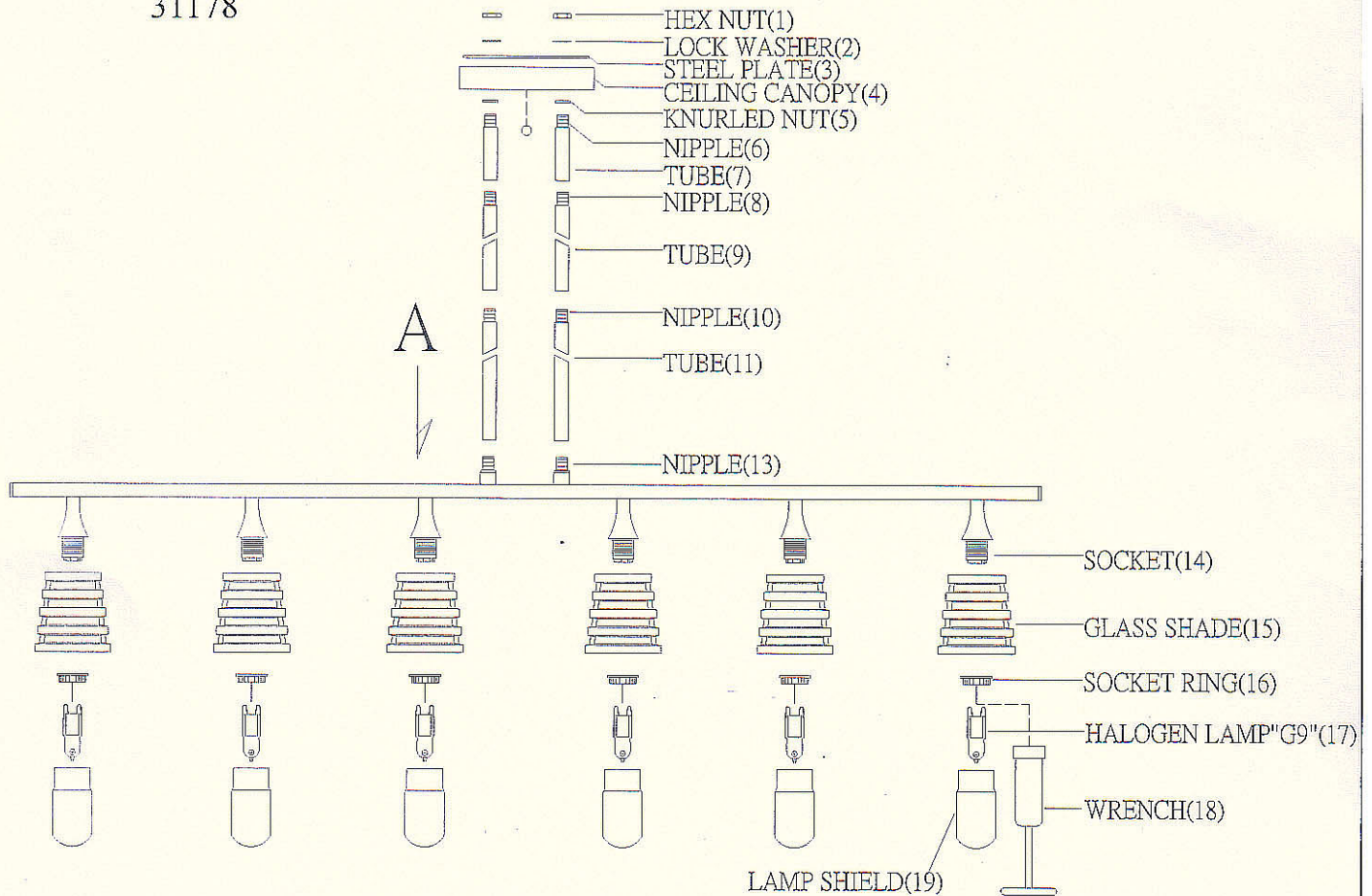


Assembly Instructions

ITEM NO: 31177

31178



1. Carefully remove the fixture out of the carton, and check that all the parts are included referring to the above illustration. Make sure not to misplace any parts that are needed for the installation;
2. Install the tube(11)&tube(9)&tube(7) onto nipple(13)&nipple(10)&nipple(8), snug until tight;
3. Slide the knurled nut(5), ceiling canopy(4), steel plate(3) and lock washer(2) onto nipple(6), and secure them with hex nut(1);
4. Put the glass shade(15) onto socket(14), and secure it with socket ring(16), then snug it with wrench(18);
5. Install the halogen lamp(17) into socket(14), then slide the lamp shield(19) onto socket(14);
6. The fixture is assembled!